



MOUNTAIN VIEW
SOKHNA





THE ULTIMATE GETAWAY

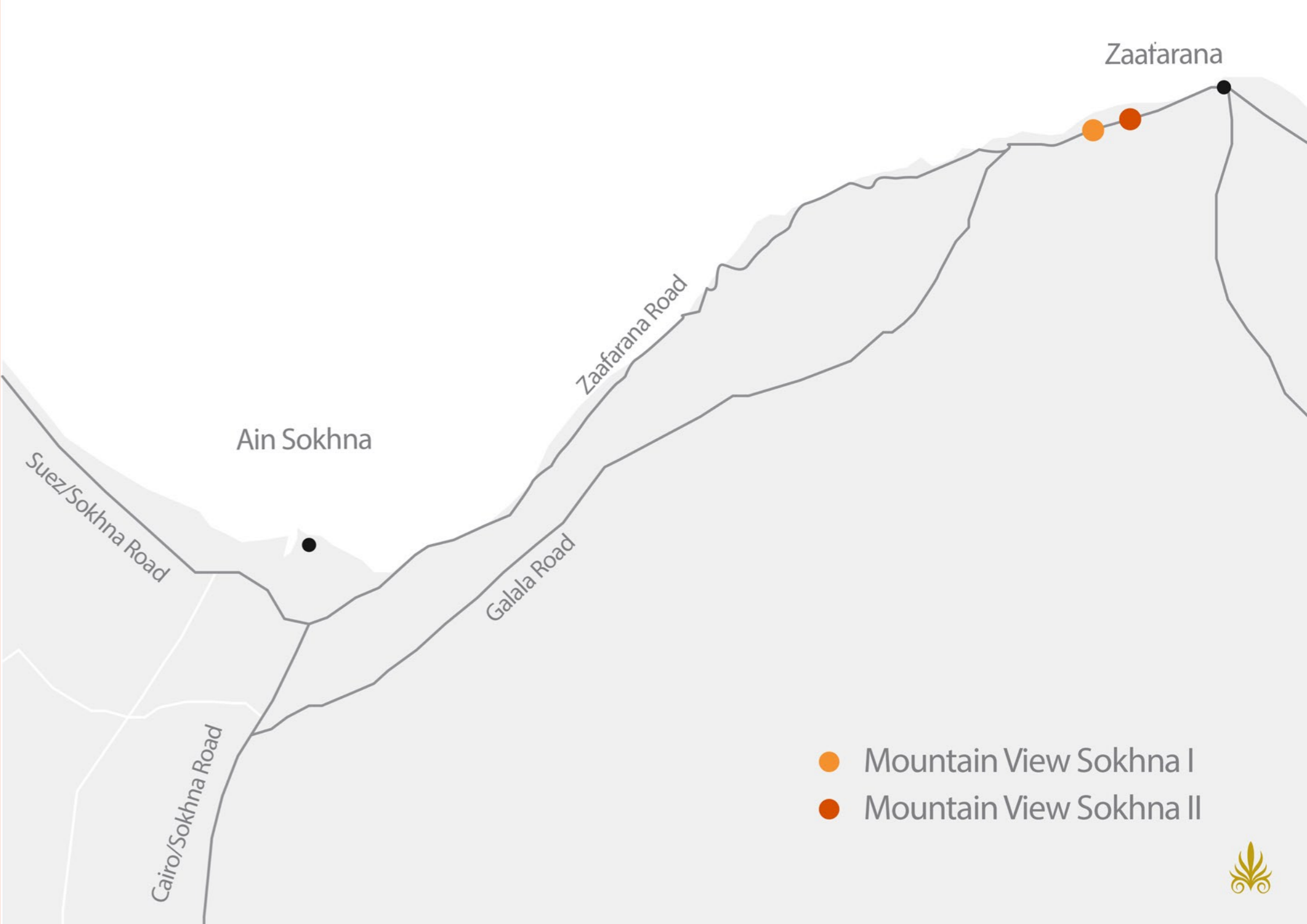
A quite 'beachful' life is all we need to lay back and take a break from all the stressful daily routines.

We tend to recharge our energy only when we are surrounded by the cozy sands, lush greenery and the fresh breeze.



A CONVENIENT LOCATION

Enjoy the luxury of living by the sea, only moments away from Cairo, yet would carry you far away from hassles of your daily routine.



MASTER PLAN

Mountain View Sokhna I

You are invited to indulge in the seemingly tropical paradise of 354,000 sq./m, at only a short drive away from Cairo's busy and tense life. Just as you pass through our gates, you'll realize pampering comes as our standard with a plethora of upscale services catering to your every whim.

Mountain View Sokhna II

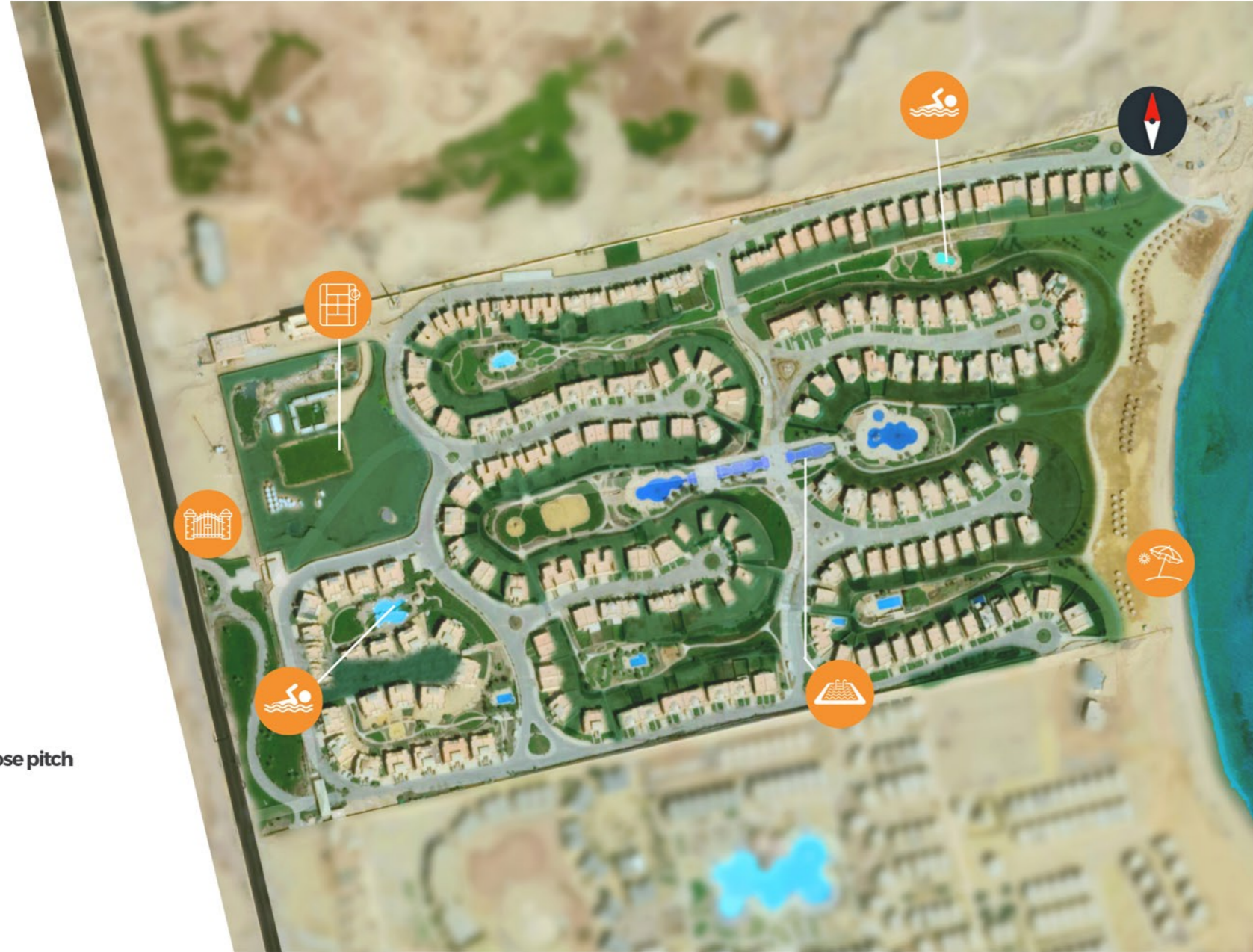
Arrayed on a private 96.600 sq./m of tropical gardens, ponds, water features, a kid's friendly environment and a well secured compound all built to a safe haven for a decent community to react and interact.



MOUNTAIN VIEW SOKHNA I

- I. Project Total Area: **55.55 FED**
- II. Total Land BUA: **62,923**
- III. Project's Number of Units: **354**
- IV. Main Valley BUA: **17,596**
- V. Main Pool + Deck BUA: **2,122**

-  Main Gate
-  Beach
-  Pool
-  Multi purpose pitch
-  Main Pool



MOUNTAIN VIEW SOKHNA II

- I. Project Total Area: **22.22 FED**
- II. Total Land BUA: **39,293**
- III. Project's Number of Units: **292**
- IV. Valleys BUA: **14,391**
- V. Pool + Decks BUA: **3,198**

-  Main Gate
-  Beach
-  Pool
-  Multi purpose pitch
-  Club House



GLAMOROUS TROPICAL STYLE

Our spacious, airy structured home designs built in rhythm with the surrounding breathtaking tropical nature of mother earth, and the fresh sea breeze lingering all-year-long evoke a harmony of solitude on an island far-away!





OUR SOKHNA LIDOS

In Mountain View Sokhna, we have all kinds of leisure. Many options! You'll find your perfect aquatic comfort zone!

We care to fulfill family oriented needs as well as youngsters' demands of fun and games! For that there were 8 high-standardly designed swimming pools in Mountain View Sokhna I.

On the other hand Mountain View Sokhna II hosted our favored Beach Marina Along with 4 other brilliantly landscaped Lidos that give our residents a clearer view of the blue shiny waters and the healing red-sea breeze!



PEACE OF MIND

In Mountain View Sokhna, we always prioritize comfort! The peaceful scenery along with the chilled atmosphere makes you want to layback on your hammock... And endlessly swing!





FACILITIES

We all agree that the beach life is the best nature has to offer, Mountain View Sokhna has developed a community where you could experience the cosiness of home along with the excitement of a beachside resort! The warm, clear Red Sea waters at Ain Sokhna and the warm sun are combined with our longtime experience of pampering and hosting our residents!



SAFETY

About an Hour drive on the Sokhna Highway with its optimum safety standards, then you arrive to our 24 hours security patrols and trained lifeguards, healthcare professionals all to insure you have a thrilled and safe experience!



COMMUNITY

At Mountain View Sokhna, you'll meet the heights of a society that embraces a decent and classy lifestyle. We at Mountain View Sokhna tend to care the most about the class of our community, decency is our keyword and comfort is our goal!

Precious time off should be spent in good company; fine dining, gathering in open gardens or simply walking the warm sands with your loved ones.

You have built an abundant life at home, now you deserve opulence in your second home. For those with grand vision, it all becomes clear, there is no view like Mountain View Sokhna



FACILITIES AND SERVICES

Enjoy an easy life experience at Mountain View with our services and dedicated team to fulfill all the community's needs of landscaping, pest control, plumbing, housekeeping, carpentry, and more, all done in premium quality.

For your ultimate convenience; we are offering a devoted professional delivery service that brings all your needs of grocery, market and pharmacy.



LANDSCAPING



CARPENTRY



PEST CONTROL



HOUSEKEEPING



ELECTRICAL SERVICES



PLUMBING



SWIMMING POOLS



SURVEILLANCE CAMERAS



SECURITY



DELIVERY SERVICE





MOUNTAIN VIEW **SOKHNA**
RETREATS



STANDALONE-A
TOTAL AREA | 263.86 M²

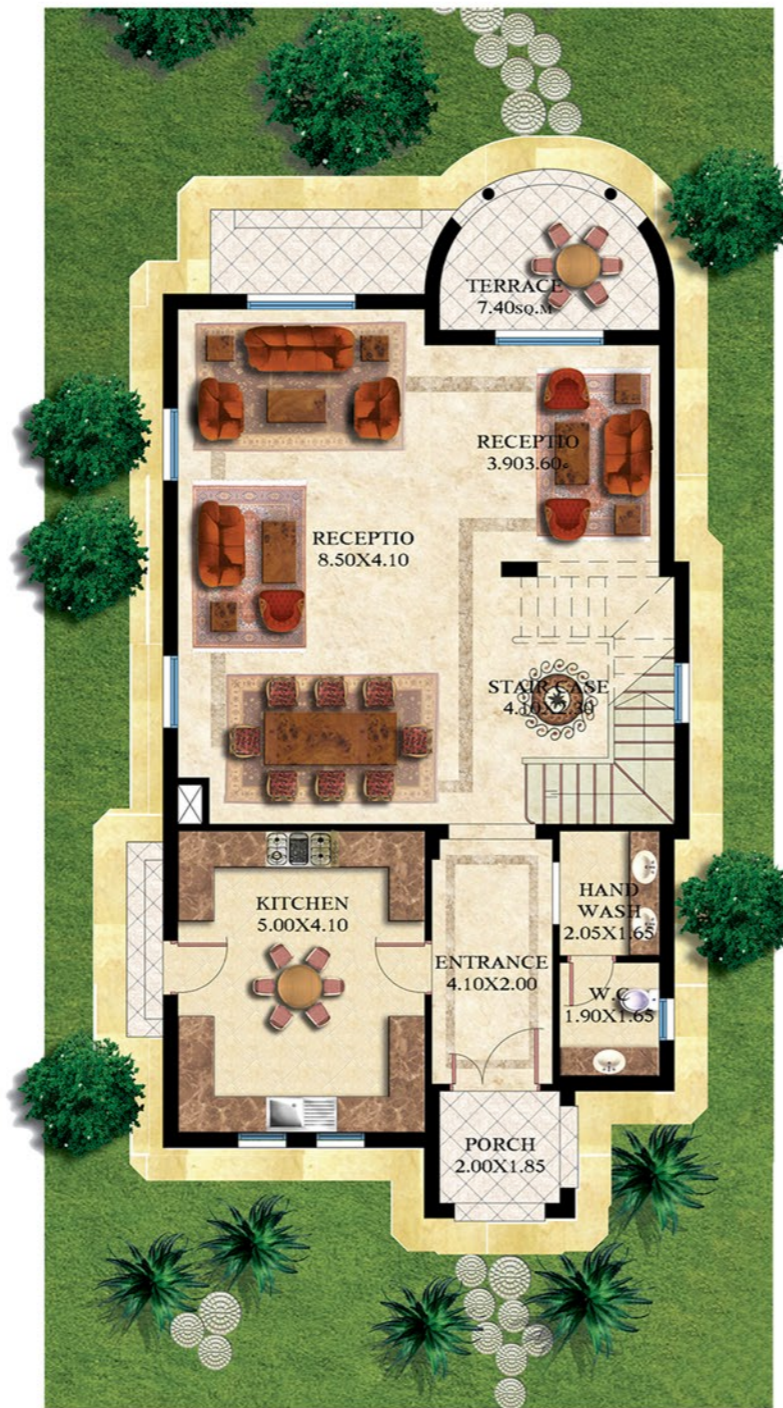


STANDALONE

TYPE A

GROUND FLOOR

SPACE	AREA
PORCH	5.60 m ²
ENTRANCE	7.51 m ²
KITCHEN	22.20 m ²
DINING	23.35 m ²
HAND WASH	3.60 m ²
BATHROOM	3.50 m ²
RECEPTION	44.70 m ²
STAIRCASE	10.60 m ²
TERRACE	14.30 m ²



FIRST FLOOR

SPACE	AREA
BEDROOM	22.50 m ²
BEDROOM	22.60 m ²
BEDROOM	25.35 m ²
BEDROOM	19.70 m ²
STAIRCASE	13.45 m ²
BATHROOM	6.10 m ²
BATHROOM	6.10 m ²
TERRACE	9.10 m ²



STANDALONE-B
TOTAL AREA | 402.55 M²



STANDALONE

TYPE B

GROUND FLOOR

SPACE	AREA
ENTRANCE	12.00 m ²
LOBBY	6.25 m ²
KITCHEN	12.60 m ²
DINING	34.83 m ²
BATHROOM	6.25 m ²
BATHROOM	5.60 m ²
RECEPTION	73.24 m ²
STAIRCASE	15.90 m ²
GUEST ROOM	16.95 m ²
TERRACE	25.70 m ²



FIRST FLOOR

SPACE	AREA
BEDROOM	23.50 m ²
DRESSING ROOM	4.95 m ²
BATHROOM	5.45 m ²
LIVING ROOM	29.00 m ²
STAIRCASE	15.90 m ²
LOBBY	13.19 m ²
BEDROOM	21.75 m ²
BATHROOM	5.75 m ²
BEDROOM	24.30 m ²
BATHROOM	7.35 m ²
BEDROOM	18.45 m ²
TERRACE	20.71 m ²



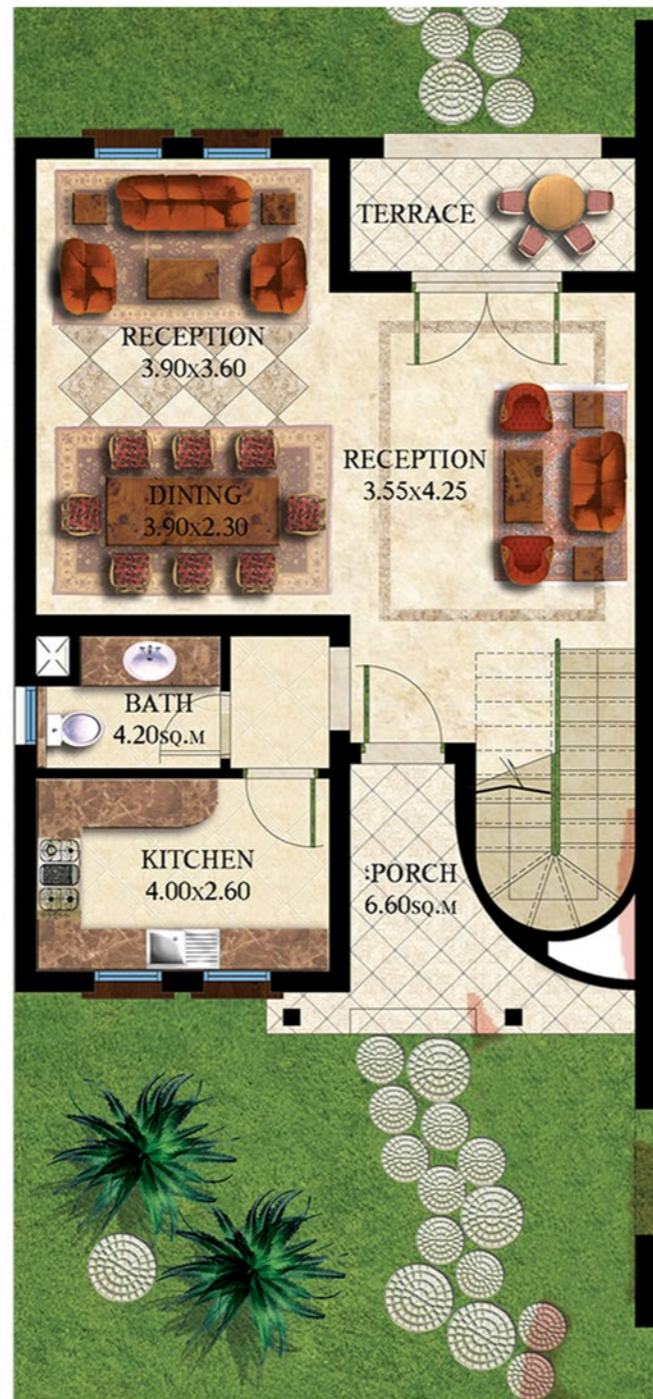
SEMI ATTACHED
TOTAL AREA | 153.5 M²



SEMI ATTACHED

GROUND FLOOR

SPACE	AREA
RECEPTION	28.00 m ²
DINING	8.30 m ²
GUEST TOILET	4.20 m ²
KITCHEN	9.80 m ²
STAIRCASE	10.50 m ²
PORCH	6.60 m ²
BUILT UP AREA	67.45 m ²
TERRACE	4.80 m ²



FIRST FLOOR

SPACE	AREA
BEDROOM	17.90 m ²
BEDROOM	16.95 m ²
BATHROOM	4.40 m ²
LIVING ROOM	19.30 m ²
STAIRCASE	8.70 m ²
BUILT UP AREA	67.25 m ²
TERRACE	5.20 m ²



CHALET - B2

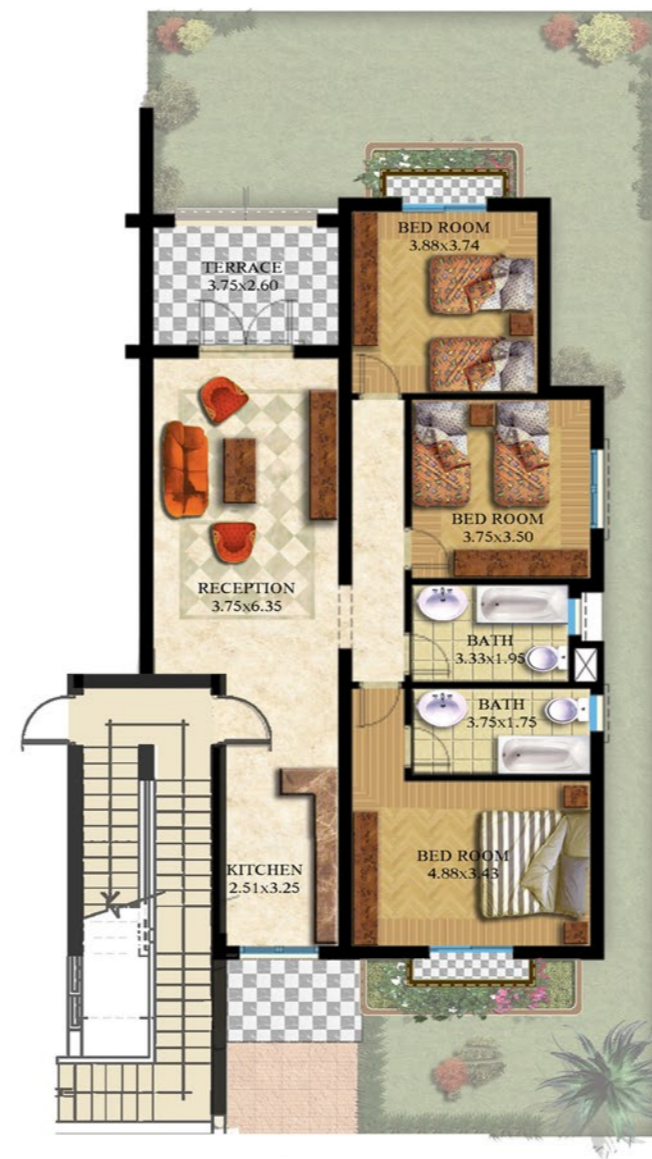
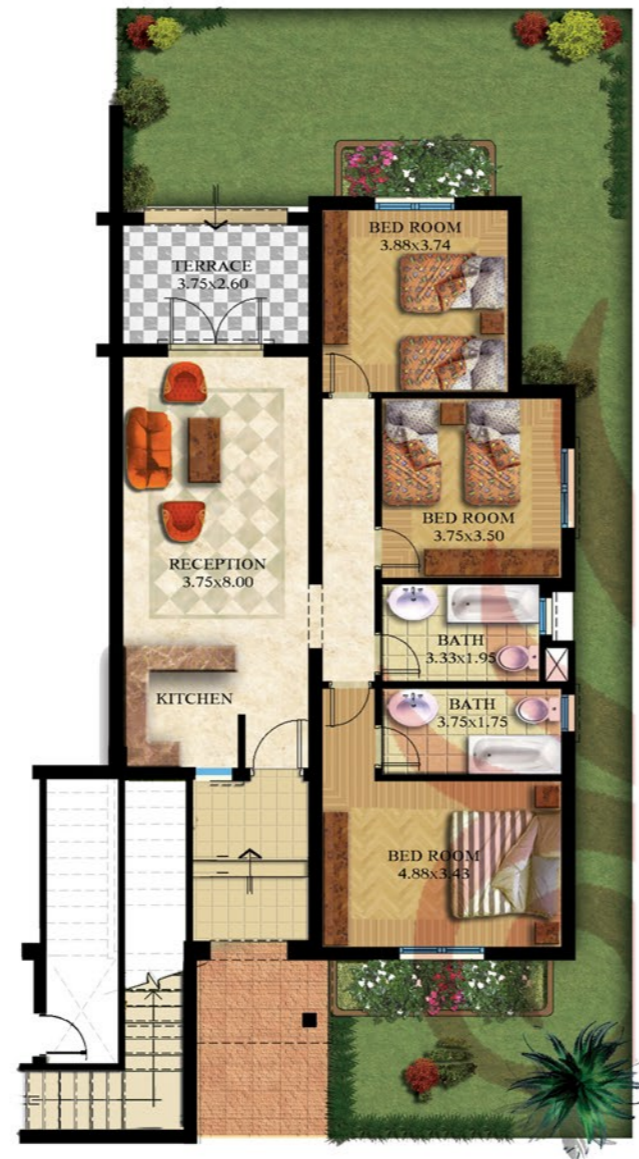
TOTAL AREA | 124.5 M²



CHALET - B2

GROUND FLOOR

SPACE	AREA
BEDROOM	14.60 m ²
BEDROOM	13.00 m ²
BATHROOM	6.70 m ²
BATHROOM	6.00 m ²
BEDROOM	17.35 m ²
RECEPTION	29.90 m ²
TERACE	10.05 m ²
STAIRCASE	14.55 m ²
CORRIDOR	7.85 m ²



FIRST FLOOR

FIRST FLOOR

SPACE	AREA
BEDROOM	14.60 m ²
BEDROOM	13.00 m ²
BATHROOM	6.70 m ²
BATHROOM	6.00 m ²
BEDROOM	17.35 m ²
RECEPTION	23.90 m ²
TERACE	10.05 m ²
KITCHEN	12.00 m ²
STAIRCASE	8.55 m ²
CORRIDOR	7.85 m ²

SECOND FLOOR

SPACE	AREA
BEDROOM	14.60 m ²
BEDROOM	13.00 m ²
BATHROOM	6.70 m ²
BEDROOM	17.35 m ²
RECEPTION	23.90 m ²
TERACE	10.05 m ²
KITCHEN	12.00 m ²
STAIRCASE	8.55 m ²
CORRIDOR	7.85 m ²



SECOND FLOOR

